

Clade Dinosauria

I recommend you read the [Wikipedia entry on dinosaurs](#). Read as much as you want, but focus on the Introductory section, the Evolutionary History section, and the Extinction section.

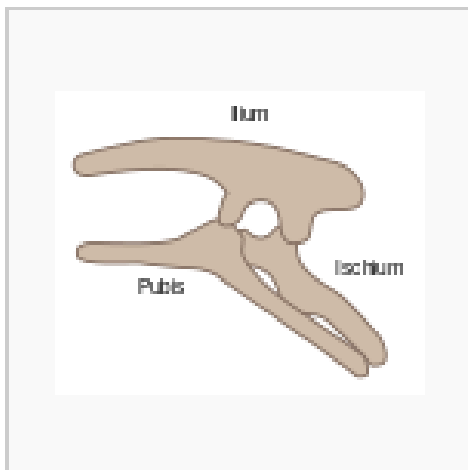
Understand what characterizes a dinosaur and how they are now considered direct ancestors of birds, such that it is almost incorrect to say “dinosaurs are extinct”. It is correct, however, to say all land restricted dinosaurs went extinct at the Cretaceous extinction, some 65 MYA after a period of about 180 MY when dinosaurs were the dominant land animals on the planet.

You are responsible for 15 dinosaurs from two main Orders.

--- *three more will be added for state competition*

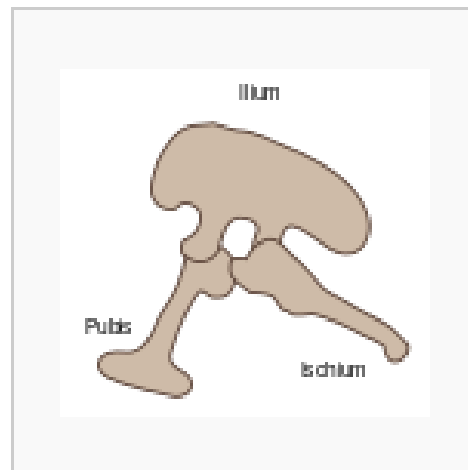
Order Saurischia (lizard-hipped dinosaurs)

Order Ornithischia (bird-hipped dinosaurs)



Ornithischian pelvic structure (left side)

pelvic bone is horizontal and extends towards the tail, similar to birds, but birds are not related to this group



Saurischian pelvic structure (left side).

“Saurischia” – pelvic bone is more vertical extending extends toward ground and head. Birds descended from this group.

Clade Dinosauria

Order Saurischia (lizard-hipped)

Suborder Theropoda

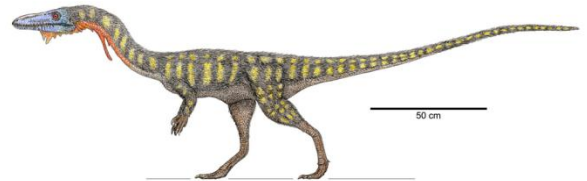
Genus *Allosaurus*

Carniverous, bipedal (i.e.therapod),
most common large dinosaur of Late
Jurassic, may have survived into
Cretaceous



Genus *Coelophysis*

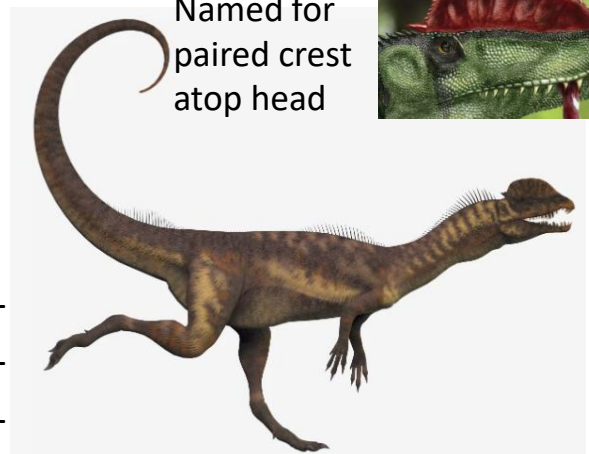
Triassic (200 MYA), bipedal,
primarily carnivorous, believed
to live gregariously (in herds)



Genus *Dilophosaurus*

Early Triassic (195-190 mya
Theropod - one of earliest
predator dinosaurs (carnivore)
~7m (23'), bipedal

Named for
paired crest
atop head



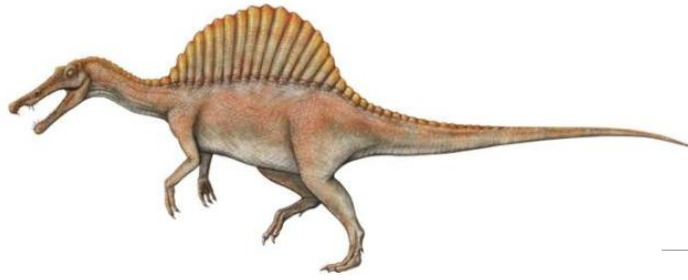
Clade Dinosauria

Order Saurischia (lizard-hipped)

Suborder Theropoda

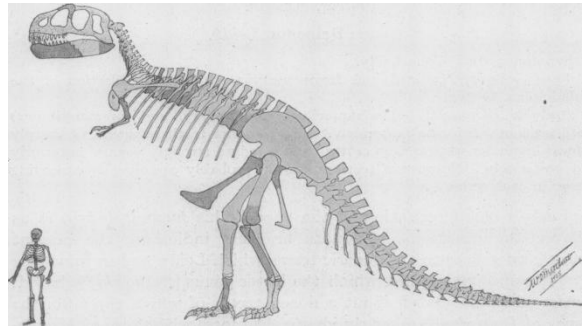
Genus *Spinosaurus*

Cretaceous 112-95 mya, very large carnivore, generally bipedal, but may be able to function on all 4 feet



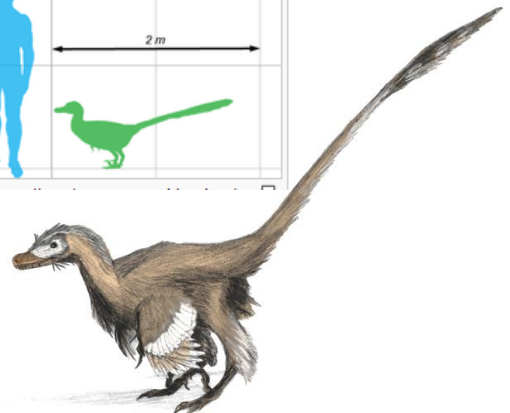
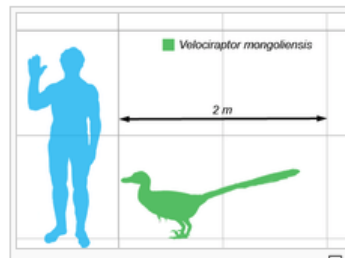
Genus *Tyrannosaurus*

Very late Cretaceous North American (70-65 MY) Carnivore, bipedal



Genus *Velociraptor*

Latest Cretaceous (75-70 MY), small "Jurassic Park" predators, but should have had feathers



Clade Dinosauria

Order Saurischia (lizard-hipped)

Suborder Sauropodomorpha

Genus *Brachiosaurus*

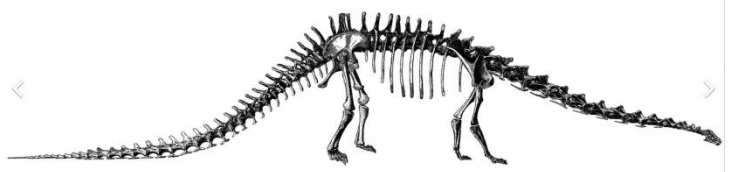
Late Jurassic (155-110 mya)

Herbivore, quadruped

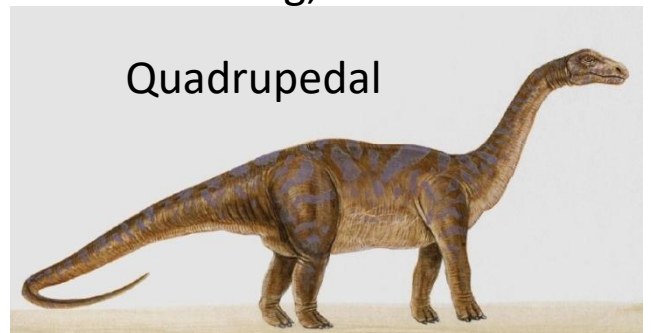


Genus *Diplodocus*

Late Jurassic herbivore
different teeth than related
herbivores, allowed him to strip
branches easily lived with
Allosaurus, likely protected by
size



20-24m long, 10-12 tons



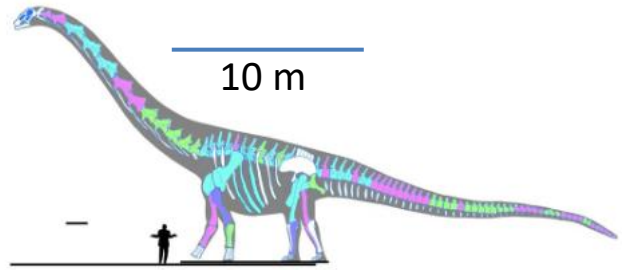
Clade Dinosauria

Order Saurischia (lizard-hipped)

Suborder Sauropodomorpha

Genus *Patagotitan* *

Cretaceous quaduped herbivore



Genus *Plateosaurus*

Bipedal herbivore – Triassic (215-200 MYA) in Europe, very small head

