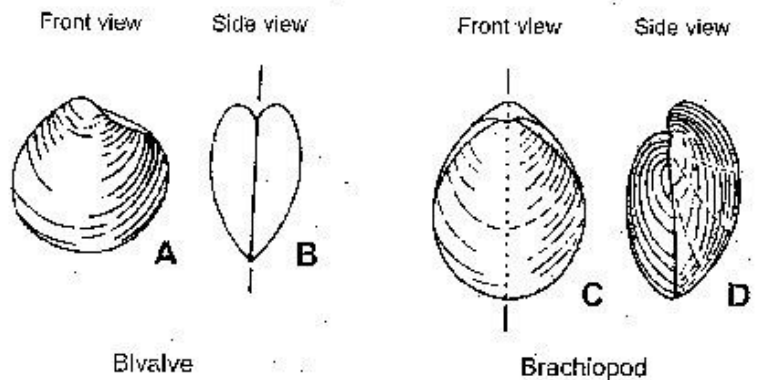


Phylum Mollusca – Class Bivalvia

- Class of marine and fresh water invertebrates with hinged shells
- Previously referred to as Pelecypoda (pelecypods)
- Includes over 9000 living species (clams, oysters, muscles, scallops)
- Majority are filter feeders
- Most species bury in sediment to protect from predators, most are modestly mobile, a few like scallops can swim
- Shell built of calcium carbonate
- Earliest bivalves were in the Cambrian Period

Clams are the longest living species on the planet. A clam found in Iceland was 507 years old. Many live 200-300 years.



Class Bivalvia

Genus Exogyra

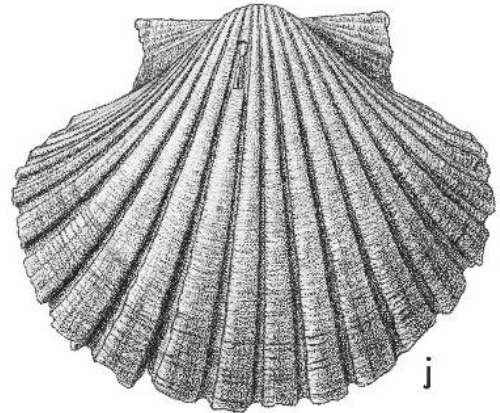


Phylum Mollusca – Class Bivalvia (cont.)

Genus *Gryphaea*



Genus *Pecten*

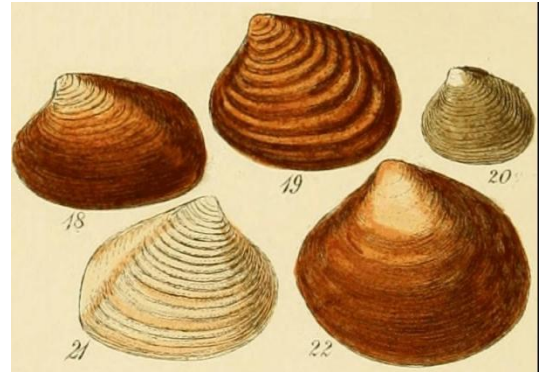


Genus *Glycymeris*



Phylum Mollusca – Class Bivalvia (cont.)

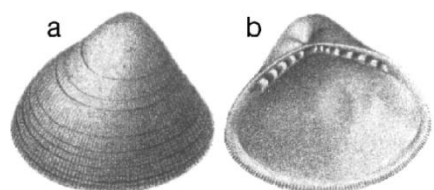
Genus *Astarte*



Genus *Nucula*



1 cm



Phylum Mollusca – Class Cephalopoda

- Squids, octopuses, cuttlefish
- Occupy all water depths and all of the world's oceans, but with only ~400 species they are very reduced from when they ruled the oceans in Paleozoic
- Modern genus are not shelled, but several extinct genus, like ammonites were.
- Predators and scavengers, cephalopods are excellent swimmers

Order Goniatitida (goniatites) *

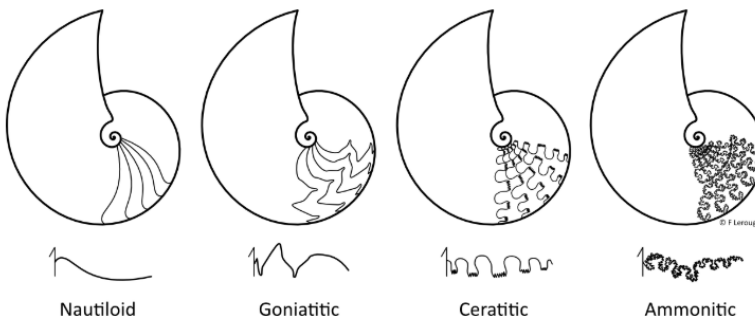
Order Ceratitida (ceratites) *



Goniatite



Ceratite



Order Ammonititida (ammonites)

Genus Baculites



Phylum Mollusca – Class Cephalopoda

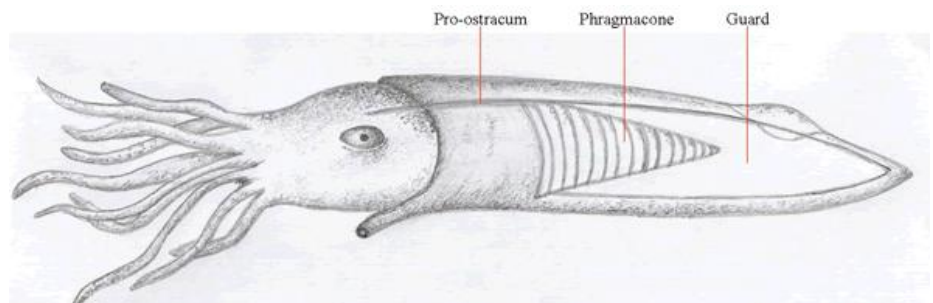
Order Ammonitida (ammonites)

Genus *Dactylioceras*



Order Belemnitida

Genus *Belemnitella* (Belemnites)



Phylum Mollusca – Class Cephalopoda

Order Nautilida

Chambered Nautilus



Order Orthocerida

Orthoceras





Phylum Mollusca – Class Gastropoda (snails, slugs)

- Second only to Class Insecta for number of species (>60,000)
- Salt, brackish and fresh water species (and in many environs)
- First gastropods were in Late Cambrian
- Known as “univalves”, (i.e. single shell)
- Most shells are coiled, although limpets are gastropods also
- Marine gastropods include some that are herbivores, scavengers, predators and parasites
-
-
-

Genus *Conus*



Genus *Cypraea*



Phylum Mollusca – Class Gastropoda (snails)

Genus *Platyceras*



Genus *Turritella*



Genus *Worthenia*