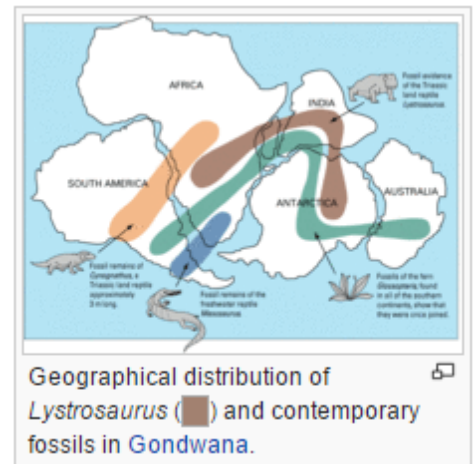
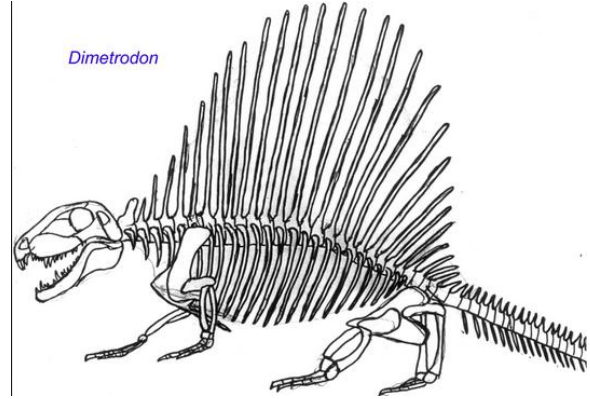
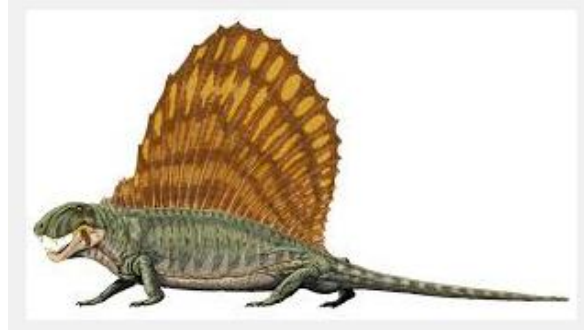


Mammal-like “Reptiles”

Clade Synapsia

82. Genus – *Dimetrodon* (*pelycosaurs*)

- Predated dinosaurs
 - More akin to mammals in skeletal structure but not mammals
 - Early Permian (290-270 MYA)
 - Quadrupedal, top Permian predator
 - Characterized by “sail” coming off their vertebrae
-
-
-
-



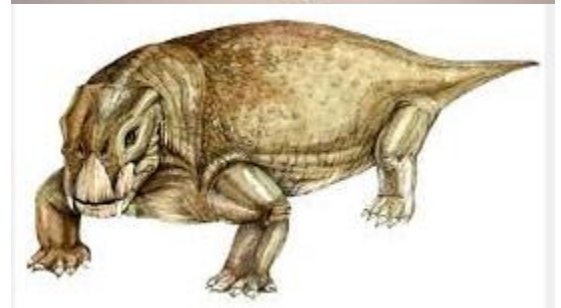
Clade Synapsia

Order Therapsidas

83. Genus – *Lystrosaurus* (*therapsids*)

Late Permian-Triassic (255-240 MYA)

- Herbivorous, pig-sized
 - Survived the Permian extinction, only to become extinct soon after
-
-
-
-

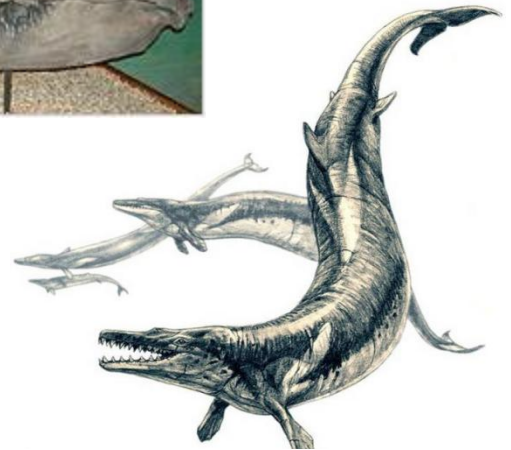


Mammals (pg. 1 of 4)

Class Mammalia

84. Genus *Basilosaurus*

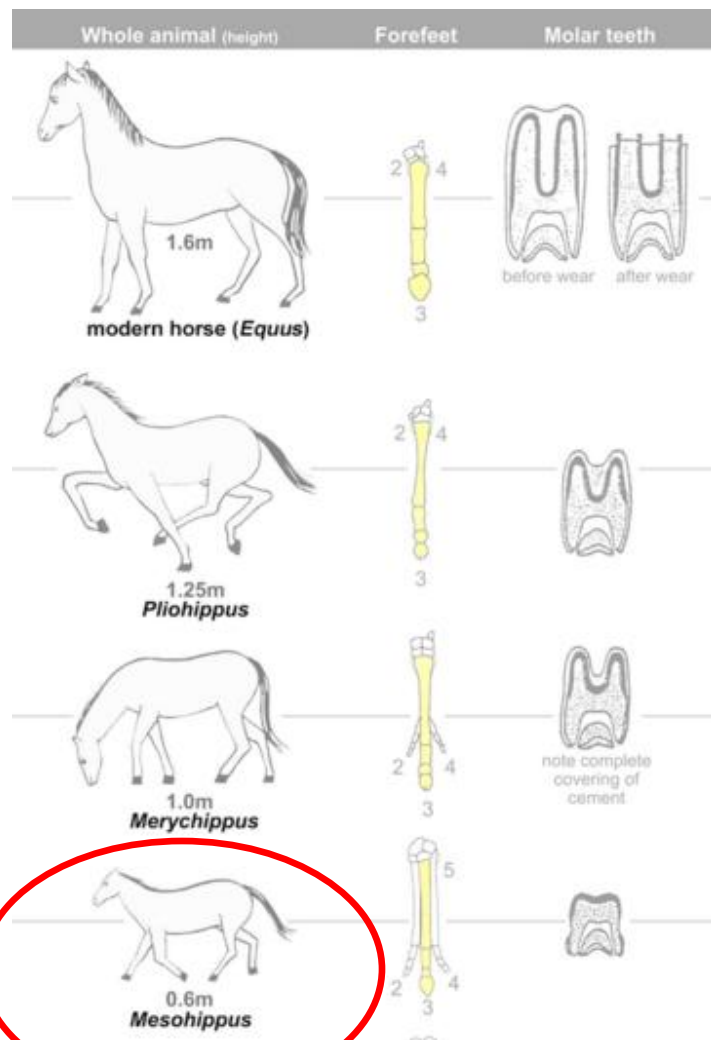
- Early marine mammal (whale)
 - 40-34 MYA (Eocene)
 - Saurus in the name is “wrong”
 - 12-20m long
-
-
-



Class Mammalia

85. Genus *Equus*

- Modern Horses
 - First species were dog-size ~50 MYA
 - Oligocene and Miocene species were larger, today's size just 4 MYA
 - Grass and sedge eating herbivores
-
-
-
-



See #87

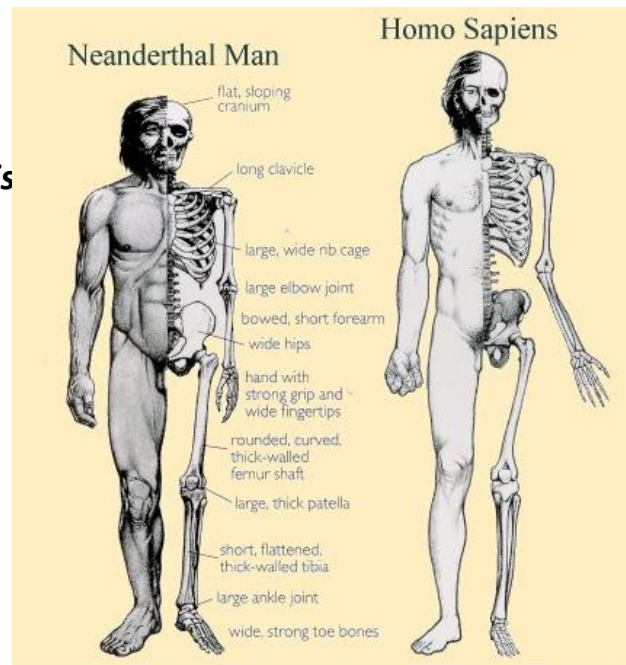


Mammals (pg. 2 of 4)

Class Mammalia

86. Genus *Homo* – *Species neanderthalensis*

- Extinct species of our Genus
 - 0.3 to 0.03 MYA (300,000 to 30,000 years)
 - Extinction in Europe can be related to extreme cold period
 - Also 5,000 years after *Homo sapiens* appeared
 - Genus *Homo* is 2.4 MY old
-
-
-



Class Mammalia

87. Genus *Mammut* (*Mastodon*)

- North and Central America
 - Pliocene-Pleistocene (5.3 to 0.1 MYA)
 - Extinction by climate change combined with hunters
-
-
-
-



Mammals (pg. 3 of 4)

Class Mammalia

88. Genus *Mammuthus* (Mammoth)

- More global than Mastodon
- Also 5 MY, but til 4,500 yrs. ago



Mammoth

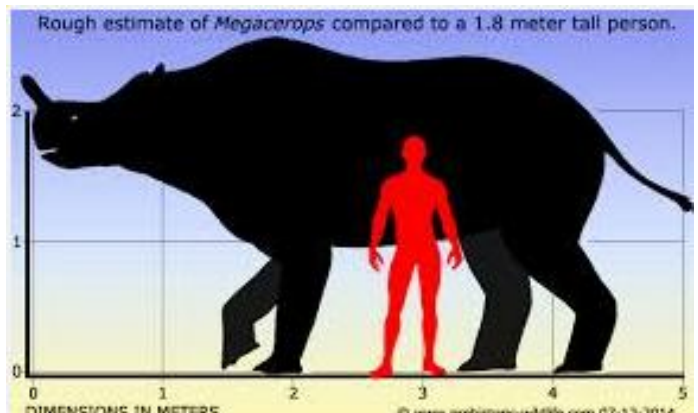
Mastodon

Class Mammalia

89. Genus *Megacerops*

- Extinct rhinoceras-like browser related to horses
- Large horns, larger than modern rhino, about elephant sized
- 38-34 MY in Late Eocene Epoch
- North American genus



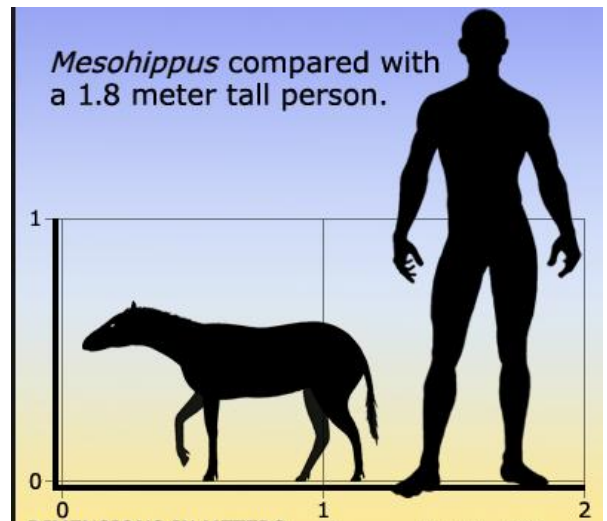


Mammals (pg. 4 of 4)

Class Mammalia

90. Genus *Meshippus*

- Ancestor to modern horse (*Equus*) -- see #82
- Eocene-Oligocene (30-40 MY)



Class Mammalia

91. Genus *Smilodon*

- saber-toothed tiger
- N. and S. America
- 2.5 MY until 10,000 years ago
- La Brea Tar pits (look it up!)

