

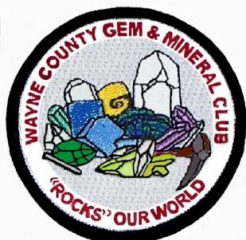
# Wayne County Gem and Mineral Club News

July, 2018

Always Looking for Places to Dig!



Rich and Jerry help at the sluice at GemFest. (see page 5)



<http://www.wcgmc.org/>  
**FACEBOOK link**



Barrus Farm Pegmatite  
June 16, 2018

One of 9 stops on our recent trip to MA and VT. (see pg. 3, more next month)

**We do not have a July meeting:  
Enjoy your summer**

## Next Club Event is the PICNIC Saturday August 11<sup>th</sup>

**When:** 10:00 AM til mid-afternoon. We will plan to eat between noon and 1:00 PM.

**Where:** The Weiler's Barn and Club Workshop  
6676 E. Port Bay Rd, Wolcott, NY

**Food:** The club will provide chicken, potatoes and drinks. Bring a side dish or dessert to share.

**Other:** Bring a lounge chair. Come prepared to have fun!

**Workshop:** Yes, the workshop will be open.  
Bring your rocks to cut or polish.



Did someone  
say FREE  
ROCKS?

At last year's picnic there was more than food on the table!

## Membership Renewal Offer

At GemFest we offered an incentive for new members to join at a discount by paying through Sept. 2019. Now we make a similar offer to current members who wish to renew.

The club's current membership year runs until September 30, 2018 and if you are a member your renewal is not due until then. However, if you opt to renew before or at the picnic (August 11<sup>th</sup>) then the fee for renewal will be reduced by \$5. This means your renewal for 2018-2019 would be \$10 for an individual and \$15 for a family. That amounts to a 33% saving for an individual or a 25% saving for a family membership. What a great deal!

Our objective is to make life easier on our treasurer while also offering members a great deal. With over 100 members now, chasing down folks between October and the end of the year is not fun for our treasurer. He needs an accurate count of members to pay our annual insurance premium which is based on membership.

You can renew by sending payment to:

**WCGMC, Bill Lesniak**  
**7449 State Street**  
**Sodus, NY 14551**

or by bringing payment to the picnic.



## Boy Scouts at GEMFEST

*By Fred Haynes*



WCGMC welcomed a new partner to its annual gem, mineral, and fossil show this year. The Seneca Trailways Council of the Boy Scouts of America added GEMFEST to their calendar of events on both their Facebook page and their weekly e-mail which is sent to Scouts and their leaders across the council. WCGMC believes this is a perfect match. The involvement of Scouts aligns with both of WCGMC's primary objectives, providing family fun and working to spread knowledge while stimulating interest in the earth sciences.



**Scouts from Brockport visit club member Craig Stephens' table at GEMFEST 2018.**

In return for the BSA's assistance with advertising, we offered all Scouts and Scout leaders in full uniform free admission to the event. It was great to see Scouts roaming the show floor and participating in all the activities. We also thanked the council for their assistance by sending a donation of \$1 for each Scout that attended. Rounding up, we counted 50 Scouts over the two days. We look forward to increasing that number next year as we fine tune and improve our relationship with the local BSA council. We'd love to do the same with the Girl Scouts and any other youth organization interested in our event.

In addition, we offered interested Scouts an opportunity to work on the Geology Merit Badge at GEMFEST. The variety of displays (at both club and vendor tables) and the many club activities were used to fulfill a number of the requirements for the badge.

In addition, I met with the 16 boys who had pre-registered through the council. We worked on the map requirement using a geologic map of New York State. Each Scout also built an egg crate collection of rocks and minerals to fulfill the collecting requirement. In doing so they learned the differences between sedimentary, igneous and metamorphic rocks and the difference between a rock and a mineral. I was able to use my chocolate chip cookie analogy yet again! I thank club members John Rhoades and Rita Lesniak for helping me on Saturday and Sunday, respectively.

Most came prepared, having completed some of the requirements as prerequisites and 11 were able to earn the badge at GEMFEST. One other came to our June meeting in Newark after completing requirements he did not have done at GEMFEST. The other four have my e-mail address should they complete the remaining requirements.

Having enjoyed this interaction with Scouts, I have agreed to do it again twice this fall. First, offering the Geology Merit Badge at the [Montezuma Audubon Center](#) in Savannah. Then, I will spend a Saturday at the council office in Henrietta where I'll help Scouts with a relatively new addition to the Merit Badge list. About five years ago BSA added a badge called "Mining in Society". I have read the requirements and am quite satisfied with the effort to integrate environmental aspects with our practical needs. Today's society does require earth's resources. Responsible mining and resource processing can co-exist with a clean and environmentally friendly world.



**Geology Merit Badge at GEMFEST:** Yep, that is me in the lower right. It even appears that I have their full attention. Perhaps I am comparing a rock to a chocolate chip cookie at this moment? Photo by Rita Lesniak



## Mineral Musing Rock Painting By Fred Haynes

The newest theme for June seemed to be painted rocks. First, club member Donna Smith brought her artistic talents to GemFest and we added a new craft to the event. Using rocks we had collected from various sites throughout the previous year, Donna set up between Linda Schmidtgal's highly popular soapstone carving booth and Dave Millis's gem tree/wire wrapping booth, creating a virtual trifecta of craft activities for youths and adults right in front of the club exhibits.



**Donna (in red) watches two children paint their rocks.** They selected their choice rocks from the boxes in the foreground. They were limited to two rocks each. We did not run out of rocks for visitors to paint, but we will need to find more for next year! Of course that won't be very hard! Rock painting was clearly a successful addition to GEMFEST.

A bit later in June, a number of us spent time in Massachusetts and Vermont visiting 9 sites and collecting a diverse set of minerals and rocks. You will likely read more on some of these sites in future newsletters and you will see specimens from some sites at the picnic in August. But here I will report on an unusual find from the Chelmsford Lime Quarry.

While combing the dumps for actinolite, diopside, scapolite, and other minerals, Glenn Weiler spotted a light blue rock hidden in a crevice in the wall of the quarry. No it was not kyanite. In fact it was not even natural. Instead it was a painted rock "hidden" there by a group

called "Chelmsford MA Rocks". They had inscripted one side of the rock with a message to take and/or rehide and a request that the finder consider acknowledging that you found the rock on their Group Facebook page.



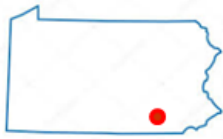
**Both sides of the rock we found "resting" in the Chelmsford Line Quarry in central Massachusetts.**



**Glenn points to the crevice in the quarry wall where the painted stone Eva Jane is holding was found.**

We bit on the idea and took the rock back to western New York and will "hide" it in some appropriate location. No I will not disclose where. In fact Glenn found the rock, so he took it and will select its next resting location. Meanwhile, I set out to join their "little" Facebook group and tell them about our find. In doing so I became the 1661<sup>st</sup> member of their "little" Facebook group and the artist who painted the stone responded almost immediately. The club states that their mission is "to spread joy and brighten people's day" via a "community-building activity designed to inspire creativity in all ages while energizing people to explore". There is no selling permitted and any messages on the rocks must be uplifting and "kid-friendly".

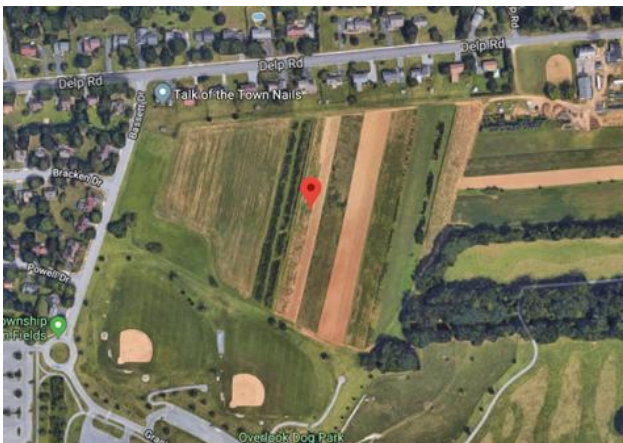
This activity may upset a few purists among the ranks of mineral collectors or outdoor enthusiasts, but for anyone looking for creative ways to engage in "rock art" or for ideas to entertain and inspire children/grandchildren you might want to peruse some of the posts on this group's public Facebook page. ["Chelmsford MA Rocks"](#).



## SITE OF THE MONTH: LANCASTER, PA FOR PSEUDOMORPHS BY FRED HAYNES



On arrival the location does not look like a typical mineral collecting site. There are not any rocks to be seen. The GPS coordinates provided by Beard (2013) are smack in the middle of a cultivated field filled with small evergreen trees just off Fruitville Pike in Lancaster, PA. The field is flanked on two sides by subdivision housing and on a third side by a pair of little league baseball fields. Your first thought is that you botched the directions.



**Lancaster PA:** Yes, this is the site and when you park at the ball fields you simply cross the outfield into the fields to start collecting. It is not a corn field, but "Field of Dreams" does come to mind.

You will not need a hammer here. You won't need boots or safety goggles and collecting in shorts is probably safe. In fact all you need are good eyes, a small sandwich bag for your finds, and perhaps a kneeling pad to allow closer visual contact with the objects you are seeking.

You will be looking for cubic-shaped forms in the soil/dirt. They were pyrite crystals, but are now partially or completely replaced by goethite and limonite. Although the chemical composition has changed from iron sulfide mineral to iron hydroxide, many other aspects of the original mineral are preserved. Some are virtual cubes with 6 equal sides with minor rounding at the center of each face. Others show the characteristic rounded edges of pyrite and occasionally one can find a 12-sided pyritohedron with each side a five-sided pentagon. Nearly all crystal faces show the characteristic striations found on pyrite. Admittedly they have lost their metallic luster,

which does not help in their detection in the brown soil, but otherwise they look like little pyrite cubes.



Here are a few of my goethite/limonite after pyrite pseudomorphs from Lancaster, PA, collected this May. The two with the red arrows are depicted again in the photo below.



These two beauties clearly show the striations and rounded edges. The one on the right is even trying to be a pyritohedron. Can you see the pentagon trying to form?

The small crystals range in size up to about  $\frac{3}{4}$ " inch although most are  $\frac{1}{2}$ " or smaller. They have weathered out of the Cambrian-age Ledger dolomite to arrive alongside bits and pieces of chert and quartz material in the soil. Because the field is cultivated and annually turned over new crystals are continually brought to the surface where they can be spotted by keen eyes.

*This site is on private property. The owners live at the nursery in the upper right of the aerial photo. They generally allow visitors to walk the field and collect, but they do require you visit them first to seek permission. There may be times when they might limit collecting on certain parts of the field.*

### Reference:

Beard, Robert, 2013, Rockhounding Pennsylvania and New Jersey, A Falcon Guide, site #7, page 42-44.

## Highlights from GEMFEST 2018

Another year, our fourth at the Greater Canandaigua Civic Center, brought more growth for our annual event. Attendance was up over 15%, as over 1400 folks crossed into the arena to visit the venue over the course of two days. We exceeded our expectations with our club activities, nearly running out of soapstone as 180 1.5" squares were carved, filed and polished by visitors. The sluice was busy as usual (see page 1). Over 300 bags of sand with minerals, gems, shark teeth and more were run across the sluice table.

We spent much of Friday filling 400 grab bags, each with 6 rocks (and their labels) that our members had collected during the past year: that's 2400 minerals and/or fossils! These were prizes for those who completed the scavenger hunt (over 120 did so). Others were purchased for a whopping \$1. Many who opened their bag at the show came back for more. We are already collecting for next year!

Our vendors seemed satisfied, at least all told us they would be back next year. This makes us happy as we feel we have the best set of dealers in the business. We thank our dealer chairman Eric Elias for managing that part of GEMFEST.

It is hard to thank everyone that helped. Over 30 club members spent their weekend (plus Friday) with us assisting with set-up, show events, and then takedown. But it would be remiss not to single out Rocky Rowe and Sandy Wirth who presided over the front table for the full duration of the show.

We also wish to thank Dave Korpiel and David Spiehler from the venue for their wonderful cooperation and help prior to and during the event. The GCCC is a perfect venue for our annual show and they make us feel at home in their arena.



**Jerry "The Geologist" Bastedo brought his 7' Velociraptor.** There is not much more impressive than a dinosaur, but check out that canvas backdrop Donna Smith painted, complete with a pterodactyl.



**The drill core xylophone was back.**



**Debbie explains how Glenn made this 120 pound polished sphere of rose quartz.**



**There were so many folks carving soapstone that Linda needed a helper most of the time.**



**The front table was always busy. Sandy and Rocky helped over 1400 enter the venue.**

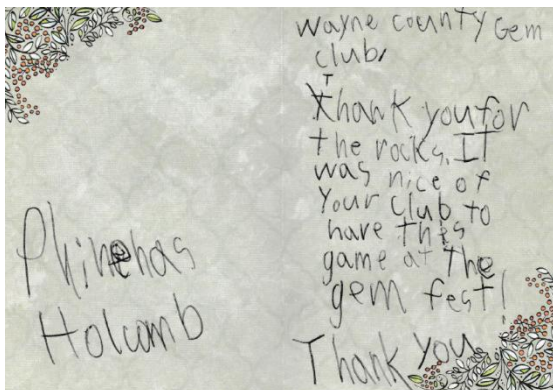
## TWO Special GemFest Winners

Perhaps you were one of the 254 who tried to guess the number of stones in the glass jar back at the soapstone booth? Maybe you wonder how many were in there and who won the stones?

Well, 8 year old Phinehas Holcomb from Canandaigua was the winner. He guessed 105. There were actually 104 in the jar. Two others also missed by one stone. Phinehas' entry was drawn at random to break the tie.



Phin was all smiles when Linda Schmidt Gall delivered him his jar of stones. When Linda asked him how he came to his guess of 105, he simply replied that he counted the stones on one side of the square jar and multiplied by four. Smart lad, and now he is the proud owner of a jar of stones from WCGMC.



Phin even wrote us a nice thank you note.

**Our second show winner** was selected by those who attended. We asked all who looked at the 9 club exhibit cases in the back of the hall to vote on their favorite exhibit. All nine exhibits received at least 8 votes from the 138 who placed a selection in the "jury" box. **Bob Linderberg** got the most votes, receiving 31 votes for his creative and elegant display of his prized possession. We think it may have been the shark teeth that put his display over the top. Bob received \$50 for his winning showcase. We'll repeat this prize next year; perhaps there will be more members willing to put together a display.



Bob Linderberg's GemFest winning showcase

### Can you name me?



- I form blue triclinic crystals.
- My hardness varies from 5 to almost 7. My vertical side is softer than my horizontal side!
- I am a cherished gemstone, but my hardness anisotropy challenges faceters.
- I am an aluminum silicate mineral.
- I tend to splinter when I fracture.
- I'm found in metamorphic rocks and pegmatites.
- Two other common minerals have the same chemical formula as me, but they form at different temperature and pressure.
- I am used in high refractory strength porcelain.

*for answer, see page 8*

## Wayne County Gem and Mineral Club 2018 Schedule *last update June 24*

Some of us are going to Canada in July but otherwise the month is fairly quiet for WCGMC. Enjoy the summer weather and long days. Take a day trip to the Syracuse and Herkimer shows. We are back together in August with a fossil trip and the picnic. Not sure what else, but at the end of August there will be an opportunity to travel to Kentucky for minerals and geodes.

**July 20-27 (Friday-Friday),** NOTE DATE CHANGE – Ontario (Bancroft, etc.) (contact Fred if interested)

**July 28 (Sat.)** – Bethany Center for Devonian fossils with RAS (get on trip list by contacting Fred before 7/17)

**August 4<sup>th</sup> (Saturday)– Green's Landing** for Middle Devonian fossils (joint with RAS Fossil Section). We will meet at Deep Run parking lot at 9:00 AM and caravan/car pool to the location which is ½ mile away. This trip involves a 1200' walk along the creek to the outcrop location. (more detail in August newsletter)

**August 11<sup>th</sup> – Saturday (WCGMC PICNIC, MARK THIS DATE)**

**August 31-Sept 3 (Labor Day)** – 3 day plus trip to **Kentucky** with CVGMC of NC (fluorite, geodes, etc.) Fred Haynes is the contact for more information on this trip. You would need to work your own transportation and accommodations on this one.

**September 14<sup>th</sup>** - First Fall club meeting. Workshop in September is not yet scheduled.

September – **Adirondack** weekend mid-month, probably weekend of Sept. 21-23.

October may include a return to Vermont or possibly other local sites. And, of course, Walworth !!

November: Can we possibly go south again?

### =====

### UPCOMING GEM AND MINERAL SHOWS

**July 14-15 2018 GemWorld** – Gem and Mineral Society of Syracuse, Onondaga Community College SRC Arena, visit [GMSS show page](#) for details

**July 21-22 Herkimer Diamond Gem Show and Festival**, Herkimer County Fairgrounds, visit [Herkgemshow.com](http://Herkgemshow.com) for details

**August 25-26** St. Lawrence County Annual Show, visit [stlawrencecountymineralclub.org/show](http://stlawrencecountymineralclub.org/show) for details



## Wayne County Gem & Mineral Contacts

### ELECTED OFFICERS

Glenn Weiler – President [gwexterior@gmail.com](mailto:gwexterior@gmail.com)  
315-594-8478  
Jerry Donahue – VP [Chester145322@yahoo.com](mailto:Chester145322@yahoo.com)  
585-548-3200  
Eva Jane Weiler – Secretary [gwexterior@gmail.com](mailto:gwexterior@gmail.com)  
315-594-8478  
Bill Lesniak – Treasurer/Webmaster  
[Dirtman300@aol.com](mailto:Dirtman300@aol.com) 315-483-8061

### Board of Directors

Ken Rowe [gotrox88@twc.com](mailto:gotrox88@twc.com) 315-331-1438  
Linda Schmidtgal [lees@tds.net](mailto:lees@tds.net) 315-365-2448  
Gary Thomas [gftthomas956@gmail.com](mailto:gftthomas956@gmail.com) 585-489-2162  
Fred Haynes [fredmhaynes55@gmail.com](mailto:fredmhaynes55@gmail.com) 585-203-1733

Visit us on Facebook:

<https://www.facebook.com/groups/1675855046010058/>

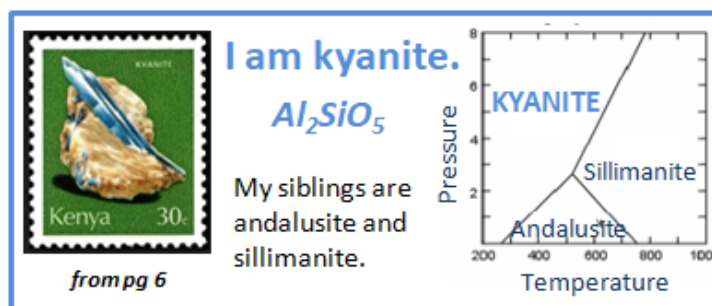
### APPOINTED POSITIONS

Bill Chapman – Field Trip Chair  
[batnpill@empacc.net](mailto:batnpill@empacc.net) 607-868-4649  
Fred Haynes – Newsletter Editor  
[fredmhaynes55@gmail.com](mailto:fredmhaynes55@gmail.com) 585-203-1733

Bill Lesniak – Website Coordinator  
Glenn Weiler – Workshop Coordinator  
Linda Schmidtgal – Collection Curator  
Eric Elias: GEMFEST Show Chair  
[thecrystalnetwork@hotmail.com](mailto:thecrystalnetwork@hotmail.com)  
Fred Haynes – Facebook Administrator

Club meets 2<sup>nd</sup> Friday of each month starting in Sept.  
Social meeting at 6:30 PM.  
Regular meeting at 7:00 PM  
Park Presbyterian Church, Maple Court, Newark, NY  
**Website –** <http://www.wcgmc.org/>

Dues are only \$15 individual or \$20 family for a full season of fun. Renewal is in October. Send to:  
Bill Lesniak (WCGMC) 7449 State St., Sodus, NY 14551



The Public is always welcomed  
First Class, Dated, Meetings & Time Values



Wayne County Gem and Mineral Club  
P.O. Box 4  
Newark, New York 14513