

STATION 1 (refer to Figure)

Which of these fossils are trilobites ? Hint: there are 2

A , B, C, D

Can you identify the *Genus* of the two trilobites

_____ and _____

Which of these fossils is NOT an Arthropod ?

A, B, C, D

TRUE or FALSE : Trilobites lived in the Triassic Period.

Identify the *Genus* or Order of the two that are not trilobites

_____ and _____

STATION 3 (refer to Figure)

Which of the photos on this page are brachiopods.

A, B, C, D

Which Genus lacks muscle and teeth to open and close valves

Atrypa, Lingula, Composita, Leptaena, Mucrospirifer

Circle the correct statement or statements !!

Brachiopods are extinct.

The symmetry plane in brachiopods is parallel to the hinge line.

Brachiopods are sessile and benthic.

Brachiopods have a segmented carapace.

Identify the **brachiopods (by Genus)** on the attached sheet:

A _____ B _____

C _____ D _____

STATION 2 --- specimens were provided at the meeting

Identify the Phylum of all 5 specimens in the box:

A. _____ D. _____

B. _____ E. _____

C. _____

Identify the Genus for A. _____

B. _____ C. _____

Which fossil was mobile when alive?

A B C D E

STATION 4

Which of these Phylum contain species that might be mistaken for pencil marks on rocks

Porifera, Hemichordata, Cnidaria, Foraminifera, Bryozoa

Which of the following is NOT a reason that some Fusulinids are good index fossils ?

A. They lived practically everywhere.

B. They evolved constantly.

C. They never changed over time.

D. There were over 10,000 species.

Which of the following lacked internal organs

Porifera, Cnidaria, Arthropoda, Brachiopoda, Anthozoa

TRUE OR FALSE: Bryozoans like murky water as it helps them hide from predators.

STATION 5 : Match the words on the right to those on the left

Trilobite _____

Cnidaria _____

Graptolite _____

Porifera _____

Lobster _____

Lingula _____

Archimedes _____

A. Crustacea

B. Sponge

C. Bryozoa

D. Elrathia

E. Brachiopod

F. Hemichordata

G. Coral

Which of these is represented by the picture below? _____

TRUE OR FALSE: Anthozoa are in Phylum Arthropoda



STATION 6

Which of the following statements is/are false?

- A. Arthropods have segmented bodies.
- B. Heliophyllum were solitary.
- C. Trilobites were scavengers.
- D. Trilobites live in modern tropical waters.
- E. Eurypterids lived during the Paleozoic.
- F. Scyphozoa are extinct.
- G. Insects and lobsters are in the same Phylum
- H. Trilobites went extinct in the Devonian Period.
- I. Chitin is an inorganic compound produced by Arthropods.

A.



B.

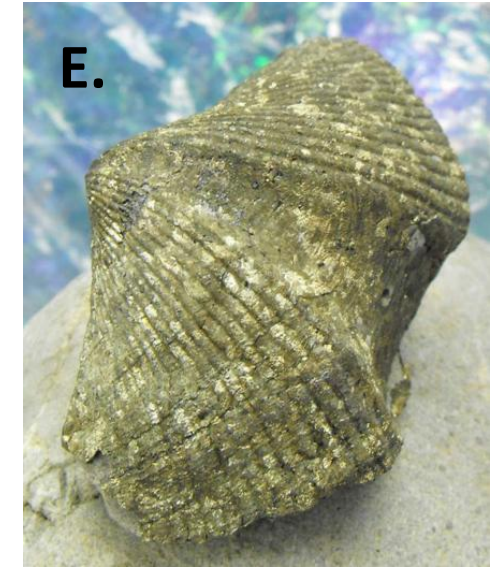
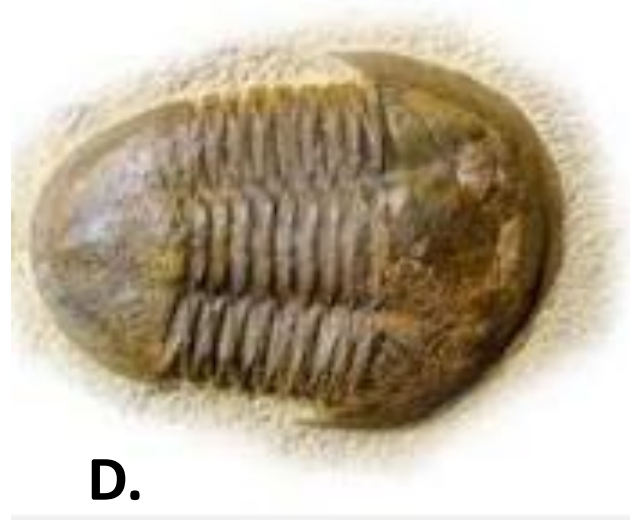
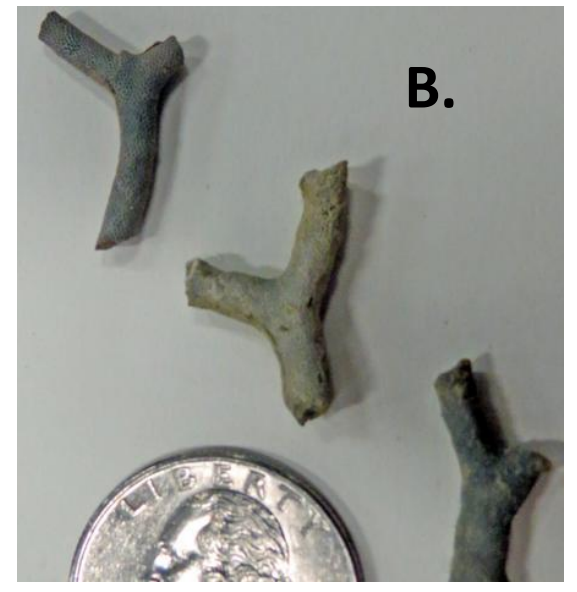


C.

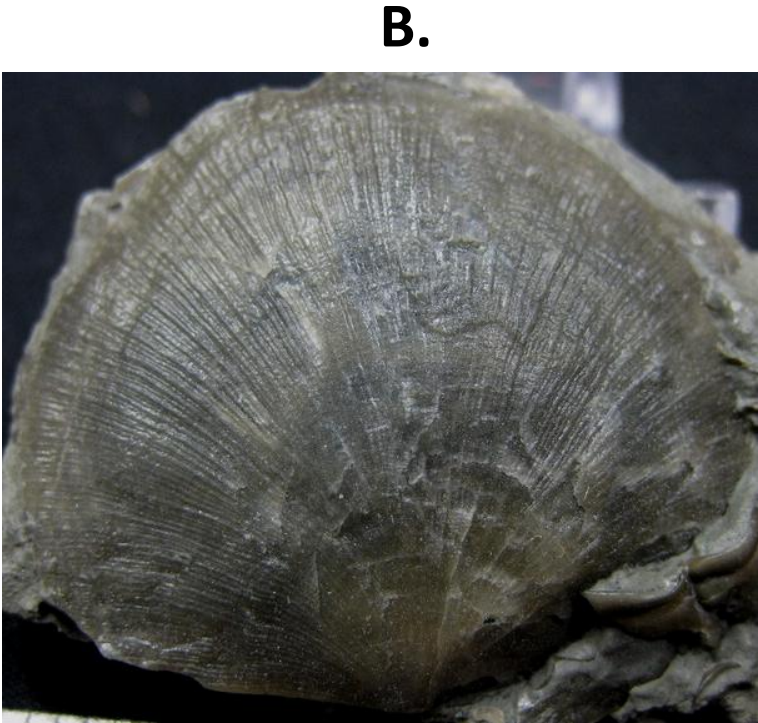


D.





Examples of these fossils were used at the meeting.



Answers

Station 1:

A and D are Trilobites

Crytolithus and *Eldredgeops*

B is not an Arthropod

False – no trilobites in Triassic

Order Eurypterid and

Genus *Hexagonaria*

Station 2: Phylum and Genus

A – Brachiopod D – Arthropoda

B – Bryozoa E – Brachiopod

C – Cnidaria

A – *Mucrospirifer*

B – *Rhombopora*

C – *Favosites*

Fossil D was mobile when alive.

Station 3:

A, B, and D are brachiopods

Lingula lack muscle and teeth

Statement 3 is False

A – *Mucrospirifer*

B – *Rafinesquina*

D – *Rhynchonella*

Station 4:

Hemichordata

Statement C is NOT a reason

Porifera lacked internal organs.

FALSE

Station 5: Matching

Trilobite – *Elrathia*

Cnidaria – Coral

Graptolite – *Hemichordata*

Porifera – Sponge

Lobster – Crustacea

Lingula – Brachiopod

Archimedes – Bryozoa

Picture is *Lingula*

FALSE: Anthozoa are coral

Station 6:

A – True

B – True

C – True

D – False

E – True

F – False

G – True

H – False

I – False